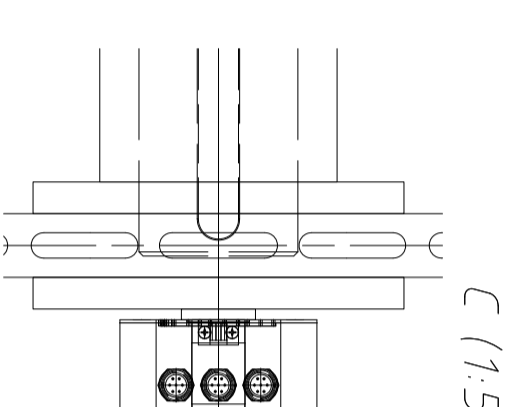
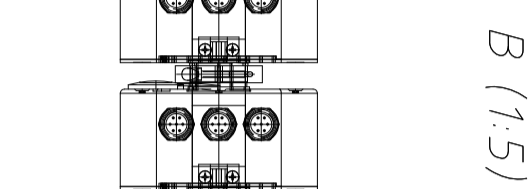
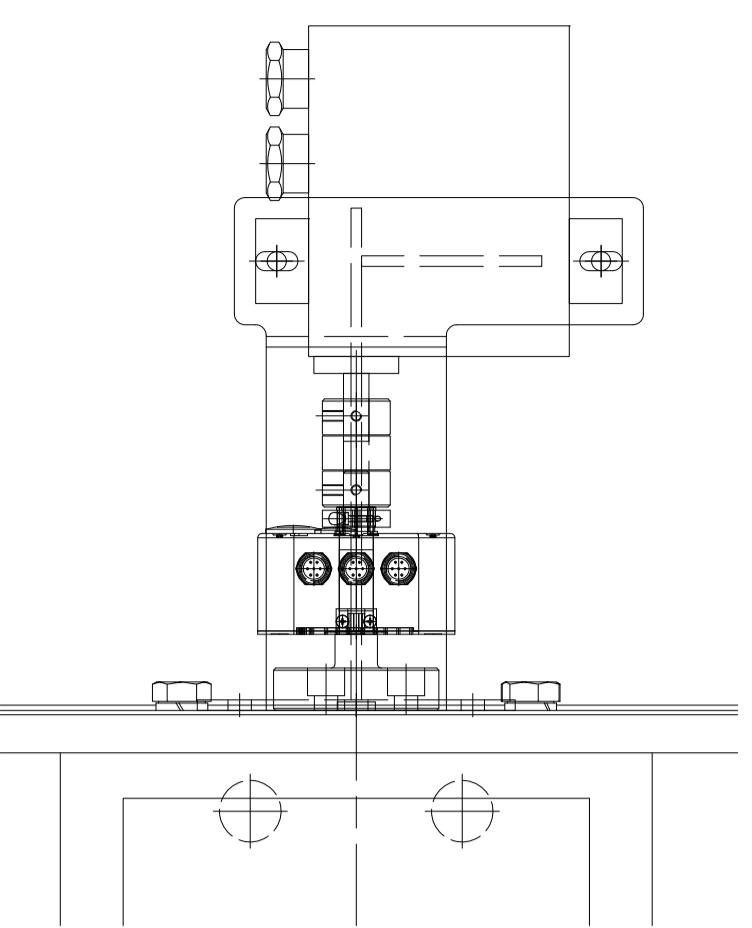
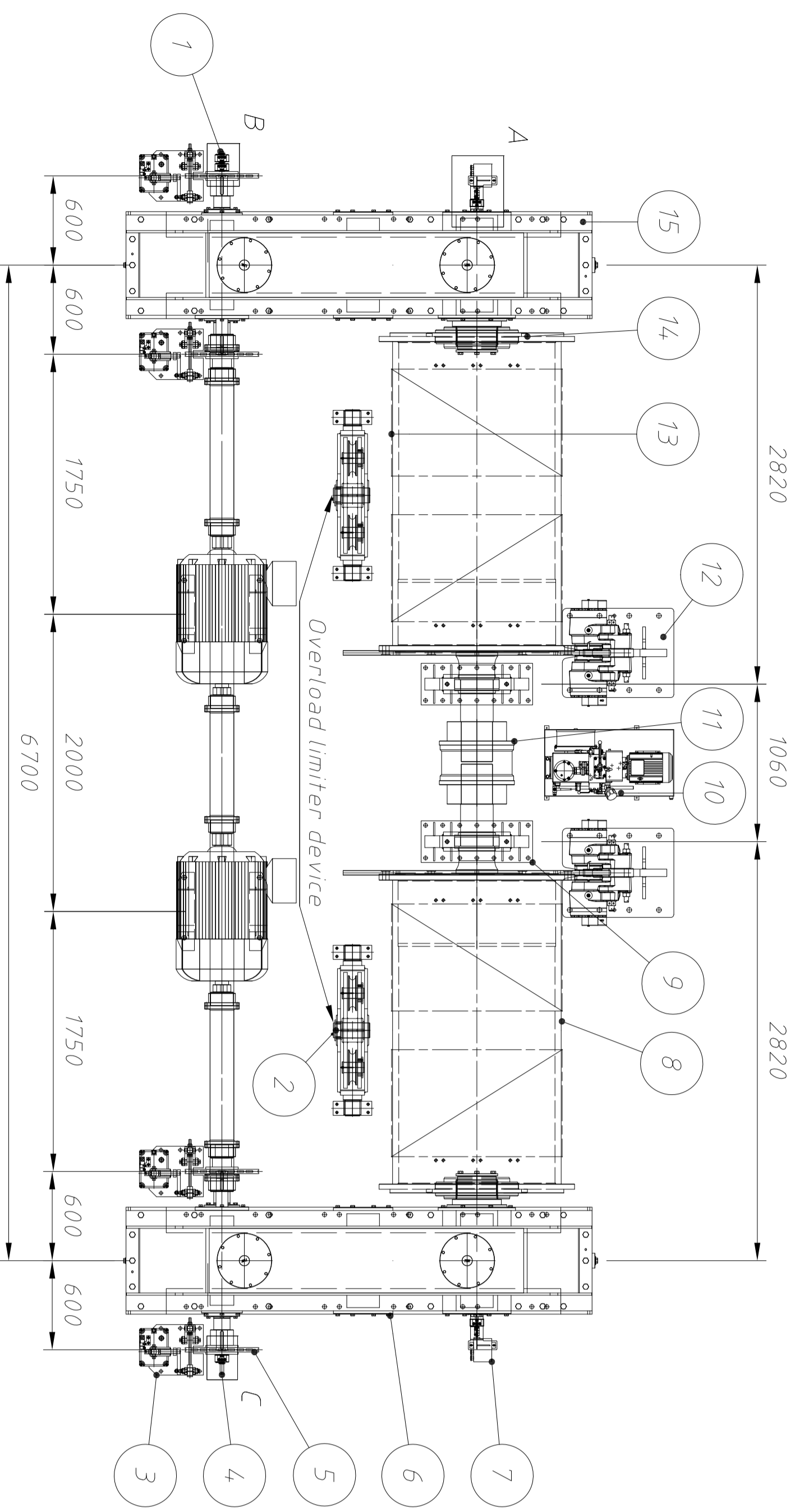
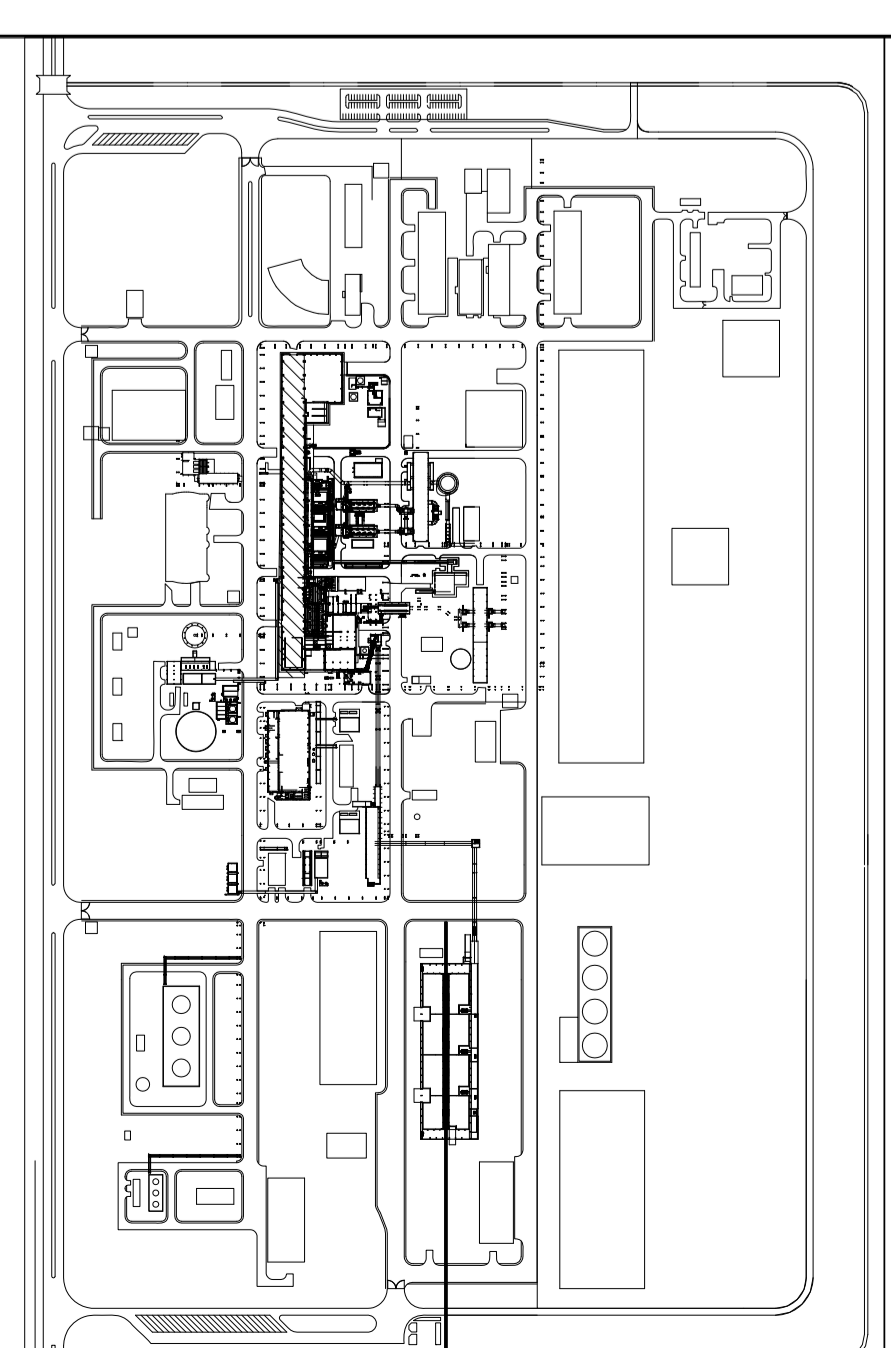


NOTE: Motors will be provided with independent fans
Brakes will be provided with manual lever for its releasing



No	Description	Dimensions	Standard	Code	Material/Weight	Notes
33	Hexagonal nut		DIN 985 - M24			
32	Arandela		DIN 985 - M24	501212-28G	F-114.0	
31	Drum disc bush		DIN 125-1 - B 25	501212-27G	F-125.2	
30	Washer		DIN 931-1 - M24 x 110		B 8	
29	Hexagonal screw		DIN 931-1 - M24 x 110			
28	Ladle beam with ladle hooks 75t			2352-CM-25 0-ME-DW-10 0 (Sheet 3)	S275JR 84.00	
27	Emergency limit switch XCR1110					
26	Coupling JAURE				85	
25	Coupling JAURE				214	
24	Motor SIEMENS				810	
23	Disc Ø1800				325	
22	Coupling JAURE				14.0	
21	Sparker sleeve 70x12				3	
20	Sparker sleeve				5	
19	Coupling JAURE				160	
18	Rope anchor				4.25	
17	Steel wire rope Ø36				365	
16	Steel wire rope Ø36				365	
15	Planetary gearbox				10000	
14	Coupling barrel				360	
13	Rope drum Ø1148				3250	
12	Hydraulic emergency brake STR03A40				6.25	
11	Coupling with continuous sleeve				558	
10	Hydraulic power unit				200	
9	Drum bearing				600	
8	Absolute encoder				3250	
7	Final de carrera				3	
6	Planetary gearbox				10000	
5	Double gear coupling				120	
4	Incremental encoder				1	
3	Disc brake Anvec				125	
2	Overload device					
1	Incremental encoder				2	

KEY PLAN



Estimated weight = 4500kg

GH
INDUSTRIAS ELECTROMECANICAS, S.A.
TEL.: (941) - 943.895.640
EMAIL: gh@gh.com
WWW.GH.COM

VAZNEH
TECNOLOGIA SUPPLIER:
Outotec
PROJECT: KHATOON ABAD SMELTER EXPANSION PROJECT
DRAWING TITLE: IMPROVING BEAMS SETTINGS BEHINDS
INDUSTRIAL LIFTING SYSTEM DRAWING, MAIN LIFTING SYSTEM DRAWING, TROLLEY DRAWING FOR BRIDGE CRANES (20x40x11.000)Scale: 1:40

CLIENT NO: 2353-VZ-V-250-ME-DW-0065
SHEET: A1
SHEET NO: 2 of 13
REV: 00
Client: Vazneh
Date: 04/09/2017

CONTRACTOR: CANYMES
NATIONAL IRANIAN COPPER INDUSTRIES COMPANY (INICO)

NOTES:

Technical Data:

Capacity of crane	75t/21
Main hoist	75t 2x4/2
Classification	M8 acc. FEM 1.001
mechanism	
Lifting Height	22m
main hoist	
Operation speeds:	1-10m/min
main hoist	

LEGENDS & SYMBOLS

REFERENCE DRAWINGS	DOCUMENT NUMBER
DOCUMENT TITLE	